

HIGH TABLES bridges II



A place to gather. Create spaces for people to gather with Bridges II high tables. A clean aesthetic and modular design offers versatility for touchdown and casual meeting spaces. The flexible beam design allows for single or shared leg table configurations. Counter (36") and standing height (42") models are available in 24", 30" and 36" table widths.

FEATURES



H-leg assembly creates greater stability for higher heights.



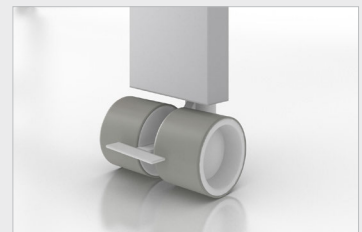
Shared leg assembly



Add-on (BRT36AxxxL) table kit seamlessly connects to existing tables.



Worksurface available in low and high pressure laminate.



Locking casters available for individual tables only



U.S.A.
Global Furniture Group
17 West Stow Road P.O. Box 562
Marlton New Jersey U.S.A. 08053
Tel/Tél (856) 596-3390 (800) 220-1900
Fax/Télé (856) 596-5684

Canada
Global Furniture Group
1350 Flint Road, Toronto ON Canada M3J 2J7
Sales & Marketing/Ventes et marketing: Tel/Tél (1-877) 446-2251
Customer Service/Service à la clientèle: Fax/Télé (800) 361-3182
Government Customer Service/Service à la clientèle,
Affaires gouvernementales: Fax/Télé (416) 739-6319

International
Global Furniture Group
560 Supertest Road, Toronto
Ontario Canada M3J 2M6
Tel/Tél (416) 661-3660 (800) 668-5870
Fax/Télé (416) 661-5671

Visit us online at/Visitez-nous en ligne à globalfurnituregroup.com

Offices throughout Canada, United States, United Kingdom and Brazil. Distribution around the world. A member of Global Furniture Group.
Bureaux partout au Canada, aux États-Unis, au Royaume-Uni et au Brésil. Distribution partout au monde. Un membre de Global Furniture Group.