



bridges | connect
share
achieve

Our task was to develop an environment for collaborative teamwork which would facilitate the connection of people and ideas in a corporate setting. To design a platform which would serve as a catalyst inviting people to engage and co-create.

At its core, **bridges** focuses on linear, back-2-back table assemblies, and it's expanded toolbox makes it ideal for a multitude of workplace solutions – it can even be integrated with system furniture.

Choose primary worksurfaces,
data and power services, and
define the purpose of each
workstation by placement
of adjacent components like
cabinets, shelves and accessories.

VLAD MULLER – R & D DIRECTOR





CONNECT

bridges allows you to mix it up, throw ideas around, be mobile, and connect the dots in different ways.



SHARE

bridges lets you plug into your own personalized space. It's like being part of your own little hive where everyone is able to contribute, share, and move the project forward.



ACHIEVE

bridges helps redefine how you connect and share.
It creates an environment where you can achieve
so much more!

1

SINGLE
WORKSTATION



2

PERSON
WORKSTATION



3

PERSON
WORKSTATION



4

PERSON
WORKSTATION



4

PERSON
WORKSTATION



4

PERSON
WORKSTATION



6

PERSON
WORKSTATION



6

PERSON
WORKSTATION



8

PERSON
WORKSTATION





FEATURES

Intuitively designed and flexible, **bridges** offers a range of inspired features that will allow you to transform your workspace.

As flexible as you are

Fits your workspace and collaborative
needs – can expand from a single table
to multi-person workstation



Great looking legs

Design savvy from the ground up with a choice of stylish leg configurations

- Two styles of leg supports on casters or levelers
- Height-adjustable round legs
- Fixed height rectangular legs with optional anodized aluminum finish



Personalize your space

Create a workspace that reflects your personality

- Glass partition
- Laminate partition with integrated accessory rail



Touch down

Easy access for plugging in laptops, tablets and phones

- Above worksurface trough allows for immediate power/data access
- Worksurface edge-mounted power/data units for easy reconfiguration



Plugged in to how you work

Access to power and data is at your fingertips

- Worksurface edge-mounted power/ data units for easy reconfiguration
- Single and double sided below worksurface trough
- Worksurface with anodized aluminum access door



Out-of-Sight

Wire management keeps your cables neat, tidy, and out of sight

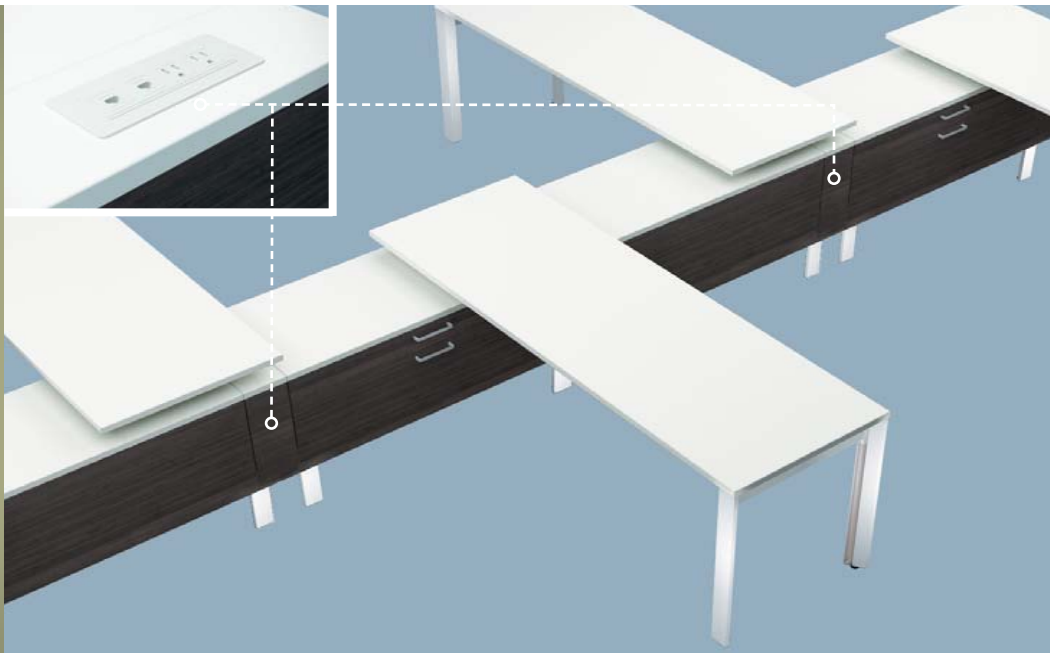
- Wire basket for under worksurface
- Horizontal cable management under storage units with optional wire basket
- Vertical leg with integrated cable manager



Benching to Desking

Storage spine delivers power and data

- Inline storage integrated power/data unit



We really stack up

Modern linear workstations that adapt to your needs

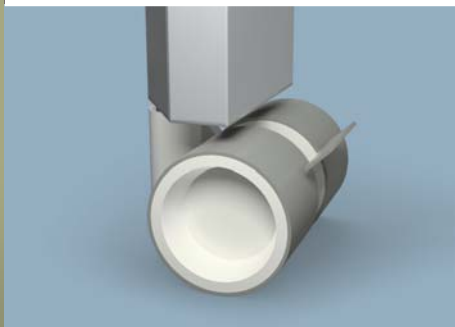
- End table shelf
- Shared shelf
- Personal shelf



Storage smarts

Designed to provide exceptional flexibility and access

- Mobile storage options
- Raised storage units provide uninterrupted access to panel based floor raceways





FINISHES

Let your imagination run free with multiple choices of woodgrain and solid laminate colours. Differentiate your workspace and create an environment that reflects your business personality and unleashes your creativity!



Please contact your Global representative or visit a dealer to see the full array of finishes and colors.

Global Furniture Group
Sales & Marketing
Customer Service

1350 Flint Rd., Downsview ON Canada M3J 2J7
Telephone 1-877-446-2251 Fax 416-667-0338
Telephone 416-739-5000 Fax 416-739-7033
www.globalfurnituregroup.com