

Seating Series

Primacare Recliner™



GLOBALcare
Quality of Life Products™

Primacare Recliners provide comfort and adjustability at your fingertips.



Upright position.



Leg rest extended.

GC3606 Primacare™ Recliner with partial, solid wood armcap.

Primacare™ Recliners are suited to space conscious environments. They are well proportioned and attractive with contours that provide proper body support and comfort in a relaxed position. Weight capacity is warranted to 350 lbs.

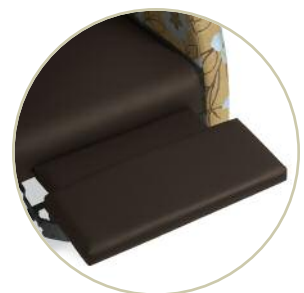
The flush mounted, recline release handle, contoured armrests and a removable seat cushion are just a few of Primacare's unique features. Primacare Recliners are ideally suited to common rooms, family rooms, patient rooms, lounge areas, maternity, intensive care and recovery applications.

Above: GC3606 shown in CF Stinson, Aloha Earth (61600), seat in Momentum, Canter Sable (09109395), arms in Charcoal Java (CJM).

Features and Benefits



Release and Recline Handle - Finger activated and flush mounted operates on either side of the chair.



Leg Support - Two piece leg support provides superior comfort in all positions.



Infinite recline positions. Primacare™ Recliners allow the user to adjust the degree of the recline to best suit their comfort level. GC3605 shown above in CF Stinson, Aloha Earth (61600), seat in Momentum, Canter Sable (09109395), arms in Charcoal Java (CJM).

Features and Benefits



Removable headrest is easily positioned to provide correct support and comfort (optional).



Upholstery covers are removable for easy cleaning and replacement.



Removable cushions with zippers allow for easy cleaning and replacement.



Armcaps



Solid Wood Full Armcap

Available in a variety of GLOBALcare wood finishes. Field replaceable.





Self-Skinned Urethane Armcap


Available in Black (BLK), Platinum (PLT) or Toast (TOA). Field replaceable.



Solid Wood Half Armcap

Available in a variety of GLOBALcare wood finishes. Field replaceable.

DESCRIPTION	DIMENSIONS			SEAT
	W	D	H	HEIGHT
	IN	IN	IN	IN
	mm	mm	mm	mm
 GC3605	29.5	34.5	45.5	17
Primacare recliner with solid wood full span armcaps or self-skinned urethane (SSU) armcaps.	749	876	1156	432
 GC3607	14	4	9.5	N/A
Primacare recliner headrest.	356	102	241	N/A

DESCRIPTION	DIMENSIONS			SEAT
	W	D	H	HEIGHT
	IN	IN	IN	IN
	mm	mm	mm	mm
 GC3606	29.5	34.5	45.5	17
Primacare recliner with 1/2 solid front wood armcaps.	749	876	1156	432

Cover: GC3605 shown in CF Stinson, Aloha Earth (61600), seat in Momentum, Canter Sable (09109395), armcaps in Charcoal Java (CJM).

This brochure provides an overview of the key features and benefits of the GLOBALcare product. For a full list of products available, including specifications, fabrics and finishes, please visit www.thinkglobalcare.com. Please refer to our GLOBALcare binder for pricing inquiries or contact your local GLOBALcare sales representative.

Global - Canada
The Global Group, 1350 Flint Rd., Downsview ON Canada M3J 2J7
Sales & Marketing: Tel (1-877) 446-2251
Customer Service: Fax (800) 361-3182
Government Customer Service: Fax (416) 739-6319

Global - U.S.A.
17 West Stow Road P.O. Box 562
Marlton New Jersey U.S.A. 08053
Tel (856) 596-3390 (800) 220-1900
Fax (856) 596-5684

Global - International
560 Supertest Road Downsview
Ontario Canada M3J 2M6
Tel (416) 661-3660 (800) 668-5870
Fax (416) 667-1821

GGI Office Furniture (UK) Ltd.
Global Way Darwen
Lancashire UK BB3 0RW
Tel +44(0) 1254 778500
Fax +44(0) 1254 778519

Visit us on the World Wide Web at www.thinkglobalcare.com

Offices throughout Canada, United States, United Kingdom, France, Brazil, Australia and Italy. Distribution around the world. A member of the Global Group.



© 2010. All Trade-Marks of GLOBAL TOTAL OFFICE. These products may be covered by one or more issued patents or pending patent applications in Canada, the U.S. and elsewhere. All intellectual property rights in applicable trademarks, patents and industrial designs are strictly reserved. Specifications are correct at time of printing. Printed in Canada. Creative / Global Group Design Center 031110 / 09.0219